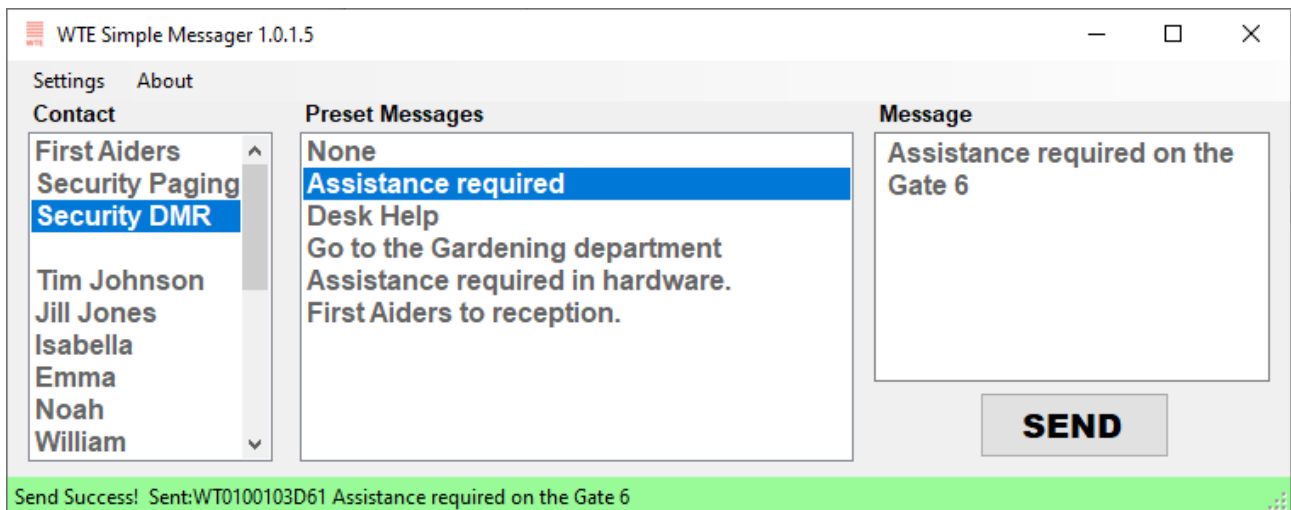




WTE SIMPLE MESSENGER

DIRECT CONNECT & NETWORKING

MESSAGING PC SOFTWARE



Usage Application Note



Table of Contents

Introduction.....	3
Usage.....	4
Communications Settings.....	5
Connecting via Serial Port.....	5
Connecting via Ethernet.....	6
Contacts.....	7
Preset Messages.....	8
Windows Protection.....	9
Disclaimer.....	10



Introduction

This application note describes configuration and use of the WTE-SimpleMessenger PC Windows application.

The WTE Simple Messenger is a free Windows PC messaging client for use with WTE products that allows up to 1000 contacts to be selected from a CSV file and combined with preset messages.

The application can connect directly to the transmitter via serial port or TCP connection. Many instances can be run as TCP clients on a network connected across an organisation to allow many users access to the same transmitter.

Using this tool, different groups or individuals can be contacted using different paging technologies. This could be individuals with belt POCSAG pagers or a security team with DMR radios.

This application is Provided "as is" for free use only with WTE products



Usage

To send a message:

1. Select an individual or group from the “Contact” list.
2. Select a message from the “Preset Messages” list.
3. Edit the message if required in the “Message” box.
4. Press the “SEND” button.

The status bar at the bottom of the screen provides details of the connection status to the WTE transmitter.

The status bar colour:

- Dark Green – When communication with the radio is OK.
- Yellow – When a message is being transmitted.
- Light Green – When the message was successfully transmitted.
- Red – When there is a communications problem to the transmitter, or a send error has occurred.

Communications Settings

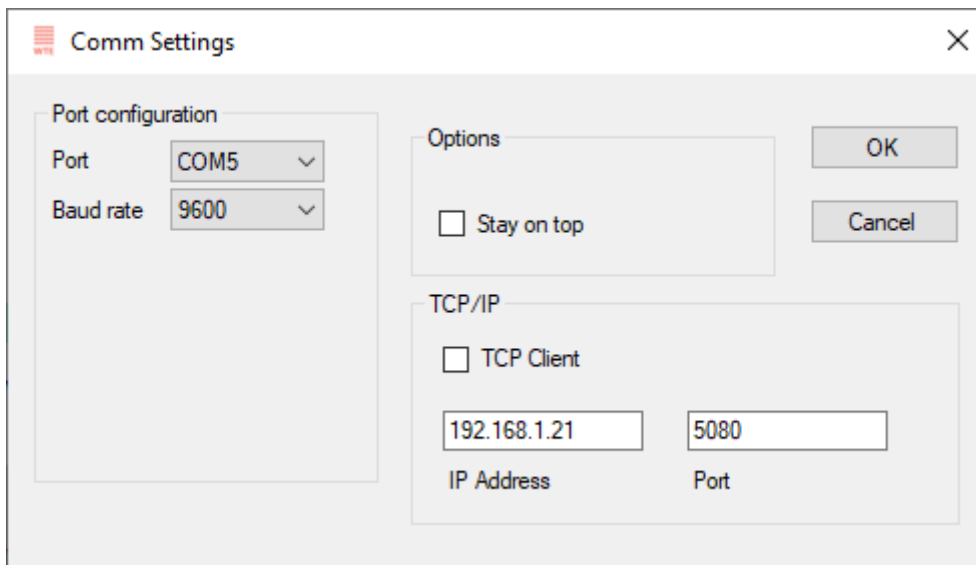
The WTE-SimpleMessenger can exchange data with WTE equipment via serial port or Ethernet.

To change communication settings, click on “Settings” menu on the top left corner of the application.

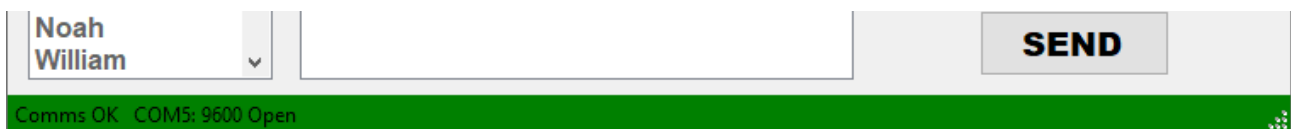
Connecting via Serial Port

To connect via serial port:

- Select the correct COM Port
- Select the baud rate that matches the baud rate settings of the transmitter.
- Ensure the TCP Client checkbox is not ticked
- Press the OK button.



When the application is able to send messages to the WTE radio, the status bar will be dark green and will display “COMMS OK” as shown below.

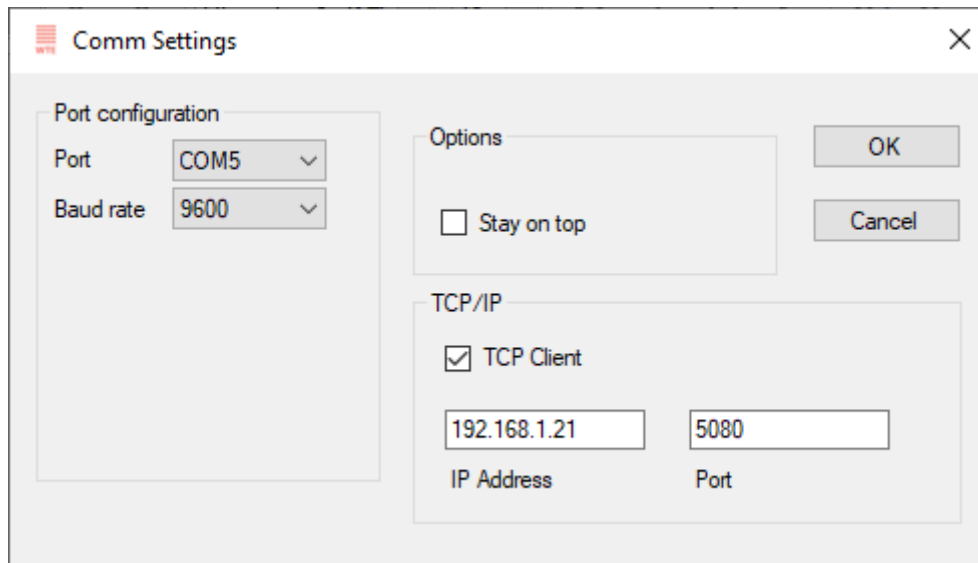


Connecting via Ethernet

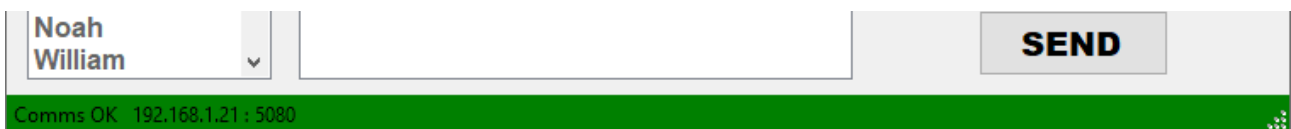
When using a TCP Client, WTE radio equipment must be configured to be a TCP Server.

To connect via Ethernet cable:

- Input the IP address and Port that matches the configured settings on the WTE radio.
- Be sure the TCP Client checkbox is ticked
- Press the OK button.



When the application is able to send messages to the WTE radio, the status bar will be dark green and will display “COMMS OK” as shown below.





Contacts

Contact information is stored in a comma separated file “contacts.csv” in the same folder as the WTE-SimpleMessenger application executable. Up to 1000 contacts may be used.

The “contacts.csv” content per line is:

NAME,XXXXXXXX,ABC

Where:

NAME is the display name of the contact

XXXXXXXX is a max 7 digit ID

ABC is a message type where:

- A is the radio message type.
 - A = alphanumeric POCSAG paging.
 - N = numeric POCSAG paging.
 - D = DMR Tier 1 Digital Mobile Radio messaging.
- B is the level for POCSAG radios (1-4) and Colour Code for DMR radios (1-9)
- C is baud rate and channel type and transmit rate. Examples are shown in the Message Types table below. For DMR radio types this field describes the DMR radio compatibility mode. This varies based on the WT radio being used.

Message Types:

Message types are defined by the WT protocol that is used by WTE products. See the WT radio user manual for a full list of message types supported for that device.

Example Message Type	Description
A10	Alphanumeric POCSAG, 512 baud 25kHz channel spacing. Beep level 1.
A11	Alphanumeric POCSAG, 1200 baud 25kHz channel spacing. Beep level 1.
A1A	Alphanumeric POCSAG, 512 baud 12.5kHz channel spacing. Beep level 1.
A1B	Alphanumeric POCSAG, 512 baud 12.5kHz channel spacing. Beep level 1.
D60	Digital Mobile Radio, colour code 6, Hytera radio support
D60	Digital Mobile Radio, colour code 6, Kirisun radio support



Preset Messages

The preset messages are stored in the “presetMessages.txt” file in the same folder as the WTE-SimpleMessenger application executable.

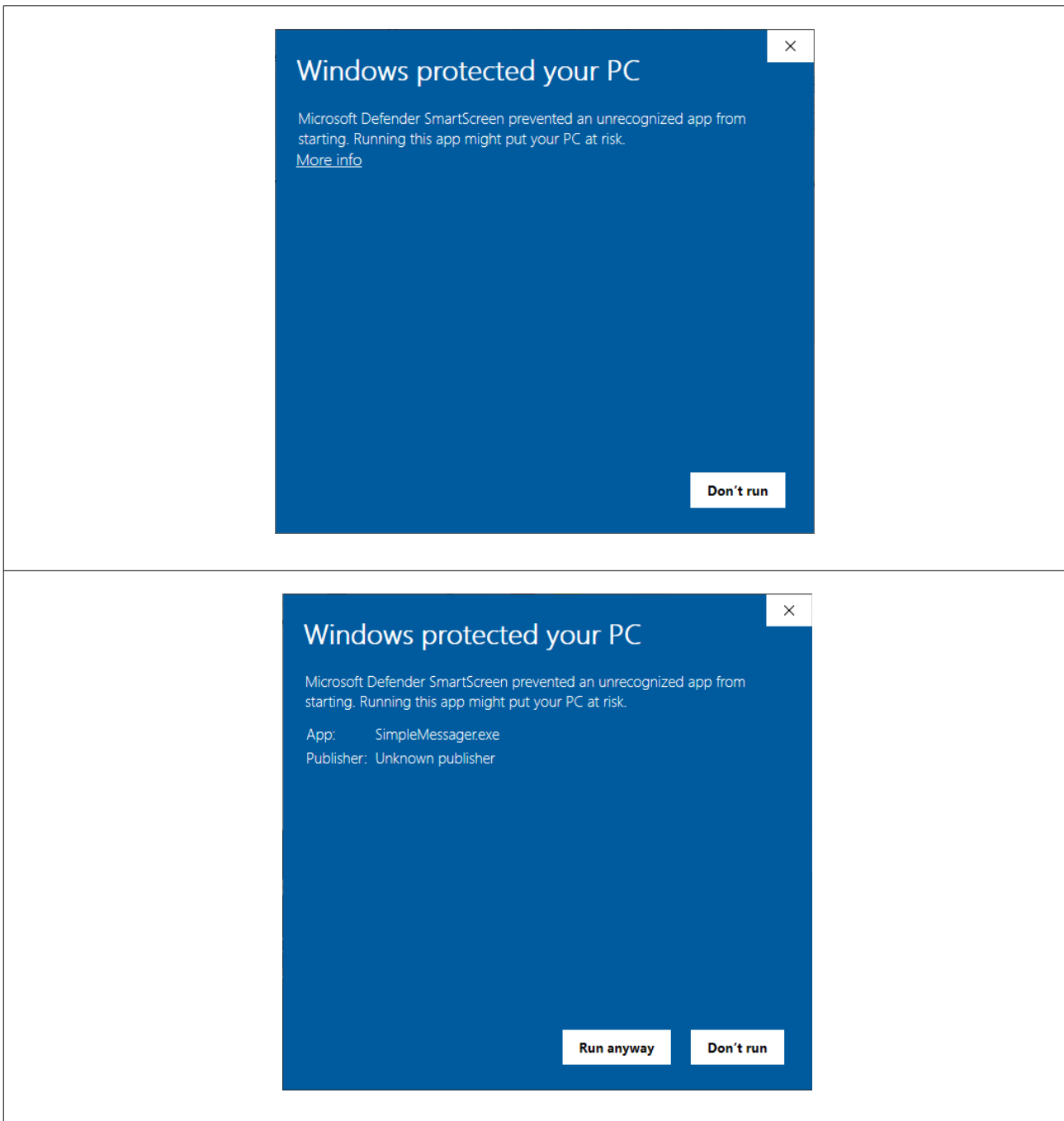
- One preset message on each line.
- Maximum number of 150 characters per message.
- Maximum of 100 preset messages.

The actual maximum transmitted message length is determined by the WTE radio product in use. Consult the WTE product user manual.

Windows Protection

First time running the application windows may complain about the application.

- Press More Info
- Press Run anyway





Disclaimer

This application is provided “as is” and is primarily intended for test and evaluation of WTE Radio equipment. It can be used freely for personal, educational or commercial environments without charge.

This document and software has been prepared in good faith and produced to assist in the use of WTE products, however WTE Limited reserves the right to modify, add or remove features without notice.

WTE Limited will accept no liability for any harm or ill effects that may be experienced through the use of this free software.

Customisation of this software is possible by WTE Limited by negotiation.